



SANCTUARY POINT

SANCTUARY COVE.

If you've ever imagined what life would be like living in a resort, then wonder no more. Here, a sense of calm seems to ripple throughout the community and everything seems to move at a gentler pace. The faces seem friendlier, events less formal and the leisure time activities more interesting.

No wonder you're going to want to call it home.



DISPLAY HOME

LOT 23 THE POINT CIRCUIT



ARTISTS IMPRESSION



SANCTUARY COVE.

One day is never enough

SANCTUARYCOVE.COM | 07 5577 6500

GPEREZ-ARCEO@MULPHA.COM.AU | 0457 702 802

SANCTUARY COVE. *One day is never enough*

SANCTUARYCOVE.COM 07 5577 6500 GPEREZ-ARCEO@MULPHA.COM.AU

SANCTUARY COVE SALES CENTRE // Jabiru House, Masthead Way, Sanctuary Cove
Open Monday to Friday 8.30am - 5pm and Saturday & Sunday 10am - 4pm // Take exit 57 off the M1

SPECIFICATIONS & INCLUSIONS

EXTERIOR DETAILING

- Rendered masonry walls
- Lightweight cladding
- Undercover outdoor patio and porch
- Aluminium windows with insect screens to operable windows
- Feature driveways
- Quality landscaping to front & rear yards
- Instantaneous hot water system
- Clothes line
- Tilt-up masonry fence to side boundaries
- TV antenna
- Remote controlled garage doors
- Heated spa pool to rear yard

KITCHEN

- Tiled splashback
- 60cm Pyrolytic oven
- Gas cooktop
- 60cm integrated microwave
- 60cm fully integrated dishwasher
- Externally ducted rangehood
- Undermount sink

INTERIORS

- Generous ceiling heights (3m to ground floor & 2.7m to first floor living rooms)
- Large format floor tiles to all ground floor living rooms
- Stone slabs to all kitchen & bathroom benchtops
- Quality carpet to all first floor living rooms
- Reverse cycle ducted air conditioning
- Insulation to ceiling and walls
- LED downlights to living rooms
- Ceiling fans to bedrooms
- Built in wardrobes to all bedrooms
- Ample storage

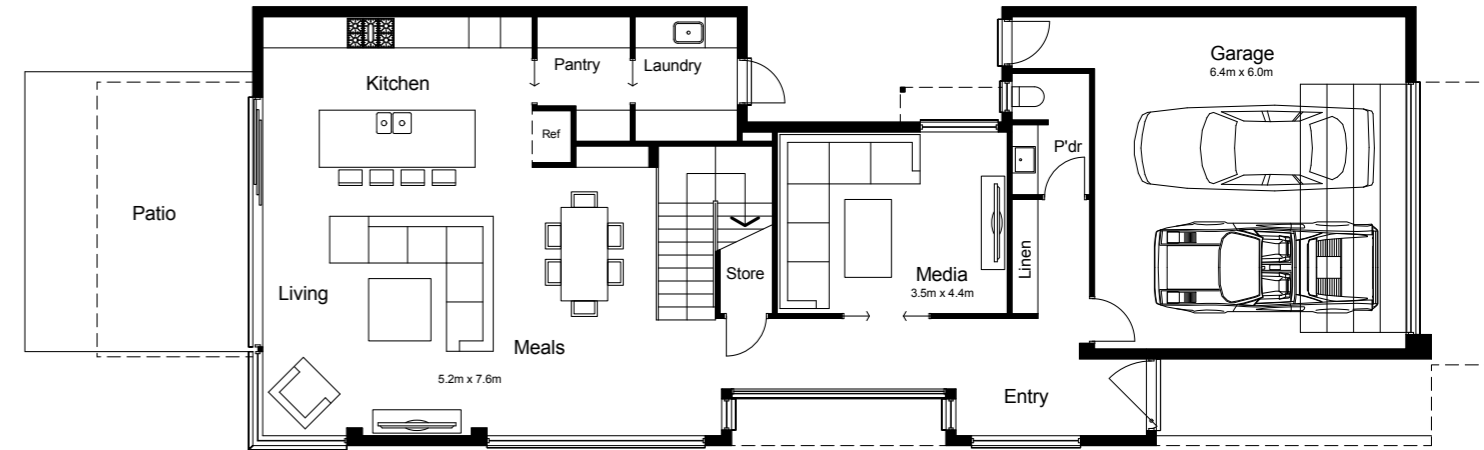
BATHROOM / ENSUITE

- Full height wall tiling
- Semi-frameless shower screens
- Quality chrome tapware
- Generous vanities & storage

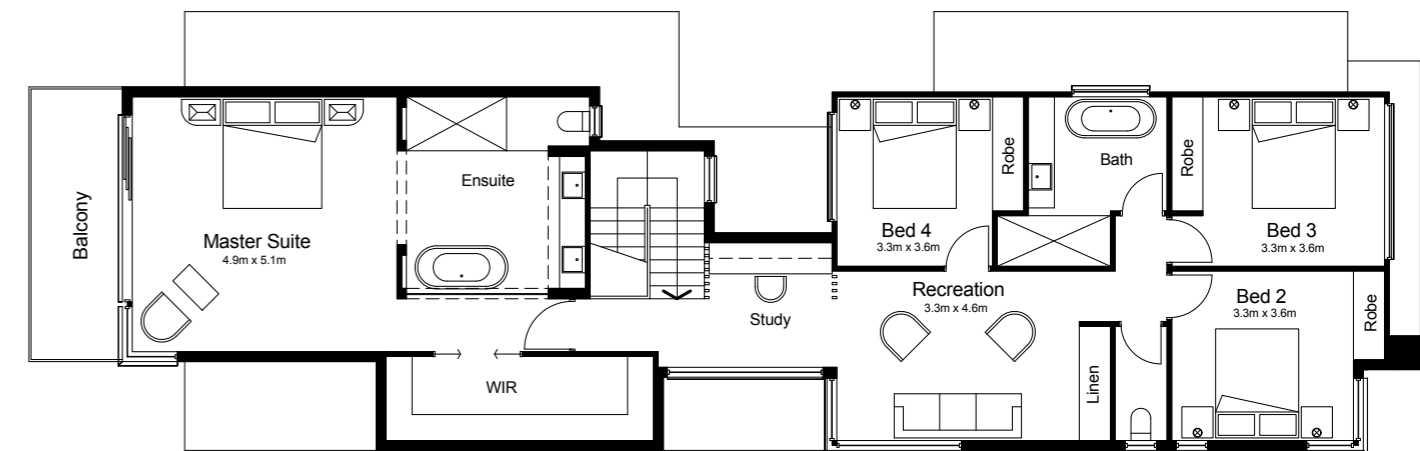


FLOOR PLANS

GROUND FLOOR 199.3m²



FIRST FLOOR 150.3m²



TOTAL 349.3m²

DISCLAIMER: Please note that whilst every care is taken to ensure the contents of this brochure are correct, this information is to be used as a guide only. Purchasers need to rely on their own enquirers and refer to contract of sale. Quay lines are subject to final approval.